

CampbellCrimpnology™ offers hose assembly systems for your high-pressure steam and air applications



VITON SEAL GROUND JOINT COUPLINGS, AIR HAMMER COUPLINGS, AND MALE STEMS

Features & Benefits

- Viton Seal Couplings pass 1000 hour MIL-H-29210 steam test.
- Eliminates leaks with nut hand tightened.
- Viton seal (formulated by DuPont for high pressure steam and air applications) is protected inside machined stem groove and by swivel nut, extending working life.
- Spud does not contain plastic seat, extending working life.
- Interchangeable with old-style domestic ground joint couplings.

Smooth
End
Detail

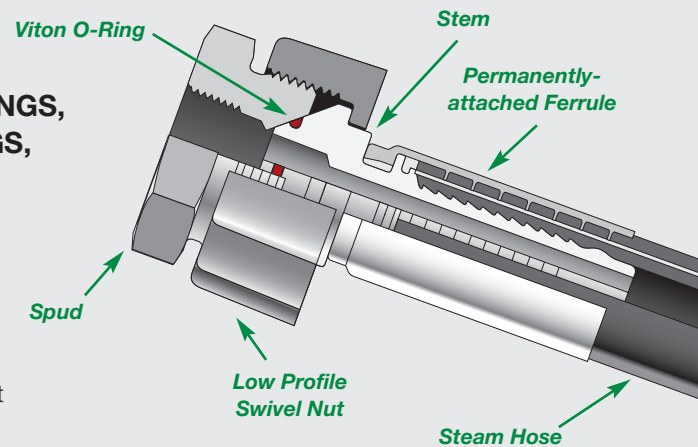


Interlock
Groove

- Machined hose ends with smooth end detail to reduce potential failure due to abrasion - grips, seals, and protects hose.
- Interlock groove locks ferrule into place for superior holding power.
- Crimped assemblies are low profile and eliminate sharp edges from bolts.
- Machined from carbon steel, cast ductile iron (meets ASTM A395 specification), and 316 stainless steel.

Recommended hose attachment

- Interlocking ferrules
- Interlocking U-bolt clamps (Page 29)



Swivel Interlocking Male Stem

- Designed for use with steam.
- Available with staked ferrule for crimped steam applications.
- Allows end-user easy connection into plant facilities.

Staked-On Ferrule for steam hose

Designed specifically for certain hose brands. Check with factory for information.

- Crimped steam assemblies eliminate the need for retightening bolts.
- Eliminates leaks, cuts costs caused by leaky clamps.
- Ferrule serrations bite to the wire achieving electrical continuity.
- Meets 250 PSI pressure rating for steam applications.

INTERLOCKING U-BOLT CLAMPS

Features & Benefits

- 360° design wraps completely around hose for superior retention.
- Clamps fit hoses tightly without cracking, eliminating costly rework.
- Bolts on "up side" allow easier tightening/ re-tightening and improve "dragability".
- Field repairable.

MAX. SYSTEM WORKING PRESSURE (PSI @ 70°F) SEE NOTE 1

Hose System Components			Hose Size										
Fitting/Coupling	Attachment	Hose Type ²	1/2	3/4	1	1-1/4	1-1/2	2	2-1/2	3	4	6	8
Viton Ground Joint/Air Hammer Cplg	U-Bolt Clamp	Rubber/Steam	1500	1250	1250	1250	1250	1250	800	500	500	—	—
Male Stem and Mender	U-Bolt Clamp	Rubber/Steam	1500	1250	1250	1250	1250	1250	800	500	500	—	—
Viton Ground Joint Coupling	Staked Ferrule	Steam	1250	1250	1250	—	—	—	—	—	—	—	—
Viton Ground Joint/Air Hammer Cplg	Long Ferrule	Rubber	1000	1000	1000	1000	1000	1000	650	400	400	—	—
Male Stem	Long Ferrule	Rubber	1000	1000	1000	1000	1000	1000	650	400	400	—	—
Male Stem	Staked Ferrule	Steam	1250	1250	1250	—	—	—	—	—	—	—	—

See footnotes 1 and 2 on Page 1

VITON SEAL GROUND JOINT COUPLINGS



DISTRIBUTOR AUTHORIZATION

Safety is of paramount concern to everyone. Due to the volatile nature of compressed air and steam, and in accordance with our ISO 9000 quality system, we reserve the right to restrict sales of our Ground Joint Viton® Seal Couplings and U-Bolt Clamps to only those distributors authorized by Campbell Fittings.

Please contact our customer service department for more information.

FEMALE SET (with low-profile nut)



Steel/Ductile Iron

hose size	part number	list each
1/2	RGJF-2	32.72
3/4	RGJF-3	41.15
1	RGJF-4	41.15
1-1/4	RGJF-5	72.87
1-1/2	RGJF-6	69.93
2	RGJF-8	84.23
2-1/2	RGJF-10	220.55
3	RGJF-12	224.29
4	RGJF-16	508.72

316 Stainless

1/2	RGJFSS-2	260.61
3/4	RGJFSS-3	270.37
1	RGJFSS-4	299.34

FEMALE SET (with wing nut)



Steel/Ductile

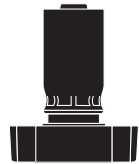
hose size	part number	list each
1/2	GJF-2	32.72
3/4	GJF-3	41.15
1	GJF-4	41.15
1-1/4	GJF-5	72.87
1-1/2	GJF-6	69.93
2	GJF-8	84.23
2-1/2	GJF-10	220.55
3	GJF-12	221.45
4	GJF-16	494.72

VITON SEAL HOSE STEM (staked ferrule & low profile nut)



Steel hose size	part number	list each
1/2	**	**
3/4	**	**
1	**	**

VITON SEAL HOSE STEM (staked ferrule & wing nut)



Steel hose size	part number	list each
1/2	**	**
3/4	**	**
1	**	**

INTERLOCKING MALE STEM



Steel npt x hose	part number	list each
1/4 X 1/4	IMS-1	7.25
1/4 X 3/8	IMS-1X38	8.00
3/8 X 1/4	IMS-38X1	8.40
3/8 X 3/8	IMS-38	6.30
3/8 X 1/2	IMS-38X2	7.80
1/4 X 1/2	IMS-1X2	7.80
1/2 X 3/8	IMS-2X38	11.10
1/2 X 1/2	IMS-2	6.45
1/2 X 3/4	IMS-2X3	14.60
3/4 X 1/2	IMS-3X2	18.60
3/4 X 3/4	IMS-3	9.89
3/4 X 1	IMS-3X4	22.77
1 X 3/4	IMS-4X3	22.37
1 X 1	IMS-4	14.47

Machined Ductile Iron

1-1/4 X 1-1/4	IMS-5	22.89
1-1/2 X 1-1/2	IMS-6	25.02
2 X 2	IMS-8	34.82
2-1/2 X 2-1/2	IMS-10	63.77
3 X 3	IMS-12	86.98
4 X 4	IMS-16	153.08

316 Stainless

1/2 X 1/2	IMSS-2	63.00
3/4 X 3/4	IMSS-3	64.00
1 X 1	IMSS-4	65.00

INTERLOCKING MALE STEM (with staked ferrule)



Steel hose size	part number	list each
1/2	**	**
3/4	**	**
1	**	**

SWIVEL MALE STEM (for use with steam)



Plated Steel hose size	part number	list each
3/4	IMS-3SW	36.43

SWIVEL MALE STEM (with staked ferrule for use with steam)



Plated Steel hose size	part number	list each
3/4	**	**
1	**	**

VITON SEAL HOSE STEM



Steel hose size	part number	list each
1/2	GJS-2	10.08
3/4	GJS-3	18.18
1	GJS-4	18.18

Machined Ductile Iron

1-1/4	GJS-5	28.04
1-1/2	GJS-6	28.70
2	GJS-8	35.99
2-1/2	GJS-10	59.92
3	GJS-12	91.78
4	GJS-16	170.32

316 Stainless

1/2	GJSS-2	93.40
3/4	GJSS-3	100.19
1	GJSS-4	127.37

VITON SEAL MALE END (Viton seal x male npt)



Steel npt size	part number	list each
3/4	GJMS-3	52.59
1	GJMS-4	52.59
1-1/2	GJMS-6	85.94
2	GJMS-8	90.62

VITON SEAL FEMALE END (Viton seal x female npt)



Steel npt size	part number	list each
3/4	GJFS-3	107.85

** Contact Customer Service for part numbers, prices, and availability

Viton should never be used with ammonia. Please contact our engineering department for information on all our gasketing materials.

FEMALE SPUD



Steel

npt size	part number	list each
1/2	GFS-2	16.70
3/4	GFS-3	14.16
1	GFS-4	14.16

Machined Ductile Iron

1-1/4	GFS-5	31.11
1-1/2	GFS-6	27.50
2	GFS-8	32.91
2-1/2	GFS-10	88.84
3	GFS-12	72.74
4	GFS-16	168.78

316 Stainless

1/2	GFSS-2	81.50
3/4	GFSS-3	88.32
1	GFSS-4	90.00

MALE SPUD



Steel

npt size	part number	list each
1/2	GMS-2	23.59
3/4	GMS-3	22.28
1	GMS-4	23.43

Machined Ductile Iron

1-1/4	GMS-5	53.32
1-1/2	GMS-6	51.37
2	GMS-8	54.11
2-1/2	GMS-10	133.12
3	GMS-12	140.55

DOUBLE SPUD



Steel

size	part number	list each
1/2	GDS-2	38.77
3/4	GDS-3	36.14
1	GDS-3	36.14

Machined Ductile Iron

1-1/4	GDS-5	64.62
1-1/2	GDS-5	64.62
2	GDS-8	64.54
2-1/2	GDS-10	137.32
3	GDS-12	145.39

SOCKET WELD SPUD



316 Stainless

size	part number	list each
3/4	GWSS-3	88.32
1	GWSS-4	90.00

All steel and machined ductile iron parts are zinc plated. DuPont Viton is the best O-ring material for couplings used in both air and steam applications. For special applications, O-rings of other materials are available upon request.

LOW PROFILE NUT



Machined Ductile Iron

size	part number	list each
1/2	RGN-2	5.41
3/4	RGN-3	8.82
1	RGN-3	8.82
1-1/4	RGN-5	13.73
1-1/2	RGN-5	13.73
2	RGN-8	15.34
2-1/2	RGN-10	68.64
3	RGN-12	59.79
4	RGN-16	169.62

316 Stainless

1/2	RGNSS-2	85.18
3/4	RGNSS-3	95.71
1	RGNSS-3	95.71

WING NUT



Machined Ductile Iron

size	part number	list each
1/2	GN-2	5.41
3/4	GN-3	8.82
1	GN-3	8.82
1-1/4	GN-5	13.73
1-1/2	GN-5	13.73
2	GN-8	15.34
2-1/2	GN-10	68.64
3	GN-12	59.79
4	GN-16	169.62

INTERLOCKING HOSE MENDER



Steel

hose size	part number	list each
1/2	IHM-2	22.71
3/4	IHM-3	23.90
1	IHM-4	35.14
1-1/4	IHM-5	50.66
1-1/2	IHM-6	68.63
2	IHM-8	42.49

DEAD-END



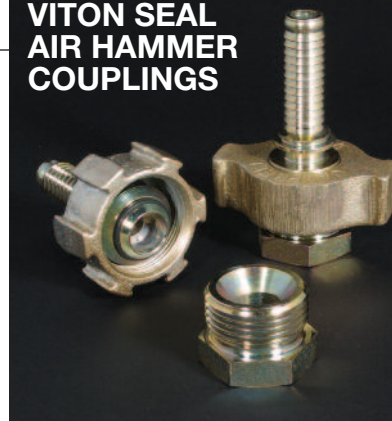
size	part number	list each
3/4	GDC-3	55.86
1	GDC-3	55.86

VITON O-RING



size	part number	list each
1/2	VO-2	1.02
3/4	VO-3	1.19
1	VO-3	1.19
1-1/4	VO-5	2.19
1-1/2	VO-5	2.19
2	VO-8	3.03
2-1/2	VO-10	4.63
3	VO-12	6.37
4	VO-16	7.04

HEAVY DUTY VITON SEAL AIR HAMMER COUPLINGS



FEMALE SET (with low profile nut)



Steel/Ductile Iron

hose size	part number	list each
3/4	RHJF-3	59.36
1	RHJF-4	54.44

FEMALE SET (with wing nut)



Steel/Ductile Iron

hose size	part number	list each
3/4	HJF-3	59.36
1	HJF-4	54.44

HOSE STEM



Steel

hose size	part number	list each
3/4	HJS-3	19.97
1	HJS-4	17.40

FEMALE SPUD



Steel

npt size	part number	list each
3/4	HFS-3	25.48
1	HFS-4	23.12

MALE SPUD



Steel

npt size	part number	list each
3/4	HMS-3	33.74
1	HMS-4	31.67

LOW PROFILE SWIVEL NUT



Ductile Iron

size	part number	list each
3/4	RHN-3	13.92
1	RHN-3	13.92

WING NUT



Ductile Iron

size	part number	list each
3/4	HN-3	13.92
1	HN-3	13.92

DOUBLE SPUD



Steel

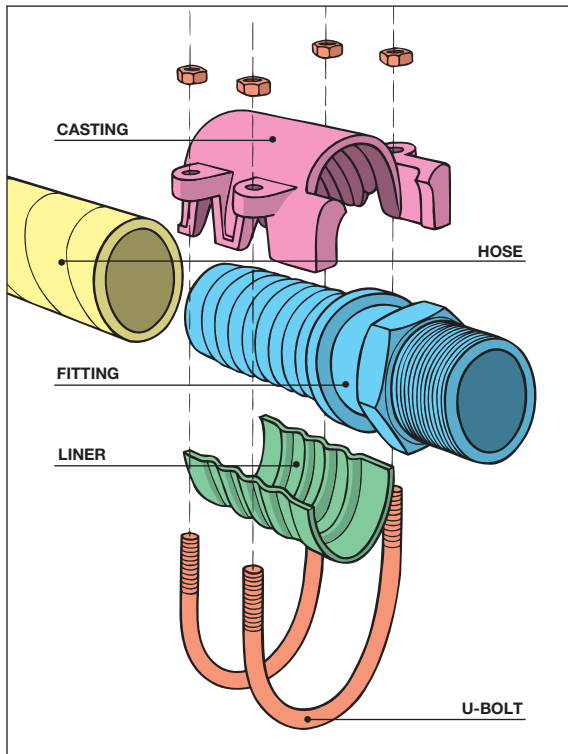
size	part number	list each
3/4	HDS-3	34.39
1	HDS-3	34.39

DEAD END



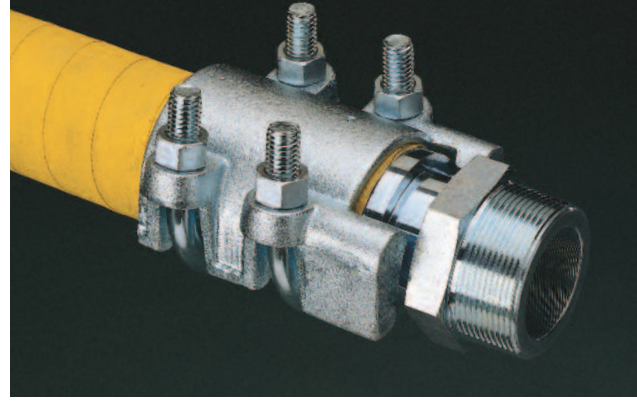
Steel

size	part number	list each
3/4	HDC-3	69.16
1	HDC-3	69.16



This 2" 1000 psi rated hose exploded in a test at 5200 psi. The hose exceeded its minimum 4X safety factor. The fitting and clamp exceeded the capacity of the hose.

INTERLOCKING U-BOLT CLAMPS

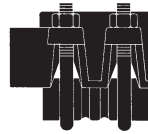


SINGLE U-BOLT



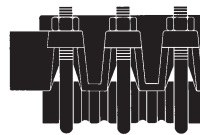
hose o.d. min	hose o.d. max	hose size	part number	list each
13/16	1-1/32	1/2	IC-2	8.09
1-1/16	1-1/4	3/4	IC-3S	10.47
1-3/32	1-3/8	3/4	IC-3	10.47

DOUBLE U-BOLT



hose o.d. min	hose o.d. max	hose size	part number	list each
1-5/16	1-1/2	1	IC-4	18.67
1-1/2	1-11/16	1	IC-4L	18.94
1-9/16	2	1-1/4	IC-5	31.03
1-15/16	2-3/16	1-1/2	IC-6	26.25
2-3/16	2-3/8	1-1/2	IC-6L	28.62
2-11/32	2-11/16	2	IC-8	39.50
2-11/16	2-15/16	2	IC-8L	34.15
3	3-9/32	2-1/2	IC-10	50.17
3-9/32	3-9/16	2-1/2	IC-10L	67.49

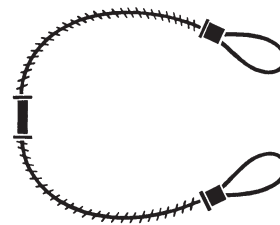
TRIPLE U-BOLT



hose o.d. min	hose o.d. max	hose size	part number	list each
3-5/16	3-3/4	3	IC-12S	77.59
3-11/16	4-1/8	3	IC-12	83.63
4-1/16	4-1/2	3	IC-12L	116.67
4-5/16	4-3/4	4	IC-16S	221.87
4-11/16	5-1/8	4	IC-16	232.34
5-1/16	5-1/2	4	IC-16L	381.01

For your convenience, clamps are available bulk packed, upon request. Bulk pack price is the same as listed above. (IC-2 through IC-4L are packed 25 pieces per carton. IC-5 through IC-8L are packed 10 per carton.)

WHIP CHEK® SAFETY CABLE (hose to hose)



hose size	part number	list each
1/2	WC-1	26.08
3/4	WC-1	26.08
1	WC-1	26.08
1-1/4	WC-2	40.74
1-1/2	WC-2	40.74
2	WC-2	40.74
3	WC-2	40.74
4	WC-4	99.17

**FERRULES FOR GROUND JOINT COUPLINGS,
AIR HAMMER COUPLINGS, AND MALE STEMS**

FERRULES



FERRULES for ground joints



Plated Steel

hose size	ferrule i.d.	part number	list each
1/2	1	FPS050100S	8.64
1/2	1-4/64	FPS050104S	8.64
1/2	1-8/64	FPS050108S	8.64
3/4	1-16/64	FPS075116	7.85
3/4	1-20/64	FPS075120	7.85
3/4	1-24/64	FPS075124	7.85
3/4	1-28/64	FPS075128	7.85
3/4	1-32/64	FPS075132	7.85
1	1-32/64	FPS100132	9.86
1	1-36/64	FPS100136	9.86
1	1-40/64	FPS100140	9.86
1	1-44/64	FPS100144	9.86
1	1-48/64	FPS100148	9.86
1	1-52/64	FPS100152	9.86
1-1/4	1-52/64	FPS125152L	13.87
1-1/4	1-56/64	FPS125156L	13.87
1-1/4	1-60/64	FPS125160L	13.87
1-1/2	1-60/64	FPS150160L	16.60
1-1/2	2	FPS150200L	16.60
1-1/2	2-4/64	FPS150204L	16.60
1-1/2	2-8/64	FPS150208L	16.60
1-1/2	2-12/64	FPS150212L	16.60
1-1/2	2-16/64	FPS150216L	16.60
1-1/2	2-20/64	FPS150220L	16.60
1-1/2	2-24/64	FPS150224L	16.60

2	2-32/64	FPS200232L	20.16
2	2-36/64	FPS200236L	20.16
2	2-40/64	FPS200240L	20.16
2	2-44/64	FPS200244L	20.16
2	2-48/64	FPS200248L	20.16
2	2-52/64	FPS200252L	20.16
2	2-56/64	FPS200256L	20.16
2	2-60/64	FPS200260L	20.16
2-1/2	3-8/64	FPS250308L	27.72
2-1/2	3-12/64	FPS250312L	27.72
2-1/2	3-16/64	FPS250316L	27.72
2-1/2	3-20/64	FPS250320L	27.72
2-1/2	3-28/64	FPS250328L	27.72
3	3-36/64	FPS300336L	27.88
3	3-40/64	FPS300340L	27.88
3	3-44/64	FPS300344L	27.88
3	3-48/64	FPS300348L	27.88
3	3-52/64	FPS300352L	27.88
3	3-56/64	FPS300356L	27.88
3	3-60/64	FPS300360L	27.88
3	4	FPS300400L	27.88
3	4-8/64	FPS300408L	27.88
3	4-16/64	FPS300416L	27.88
4	4-40/64	FPS400440L	37.85
4	4-44/64	FPS400444L	37.85
4	4-48/64	FPS400448L	37.85
4	4-52/64	FPS400452L	37.85
4	4-56/64	FPS400456L	37.85
4	4-60/64	FPS400460L	37.85
4	5	FPS400500L	37.85
4	5-4/64	FPS400504L	37.85
4	5-12/64	FPS400512L	37.85
4	5-20/64	FPS400520L	37.85
4	5-28/64	FPS400528L	37.85

**These ferrules should never
be used for steam applications**

For a complete listing of
all Ferrules and Sleeves,
go to Section G.